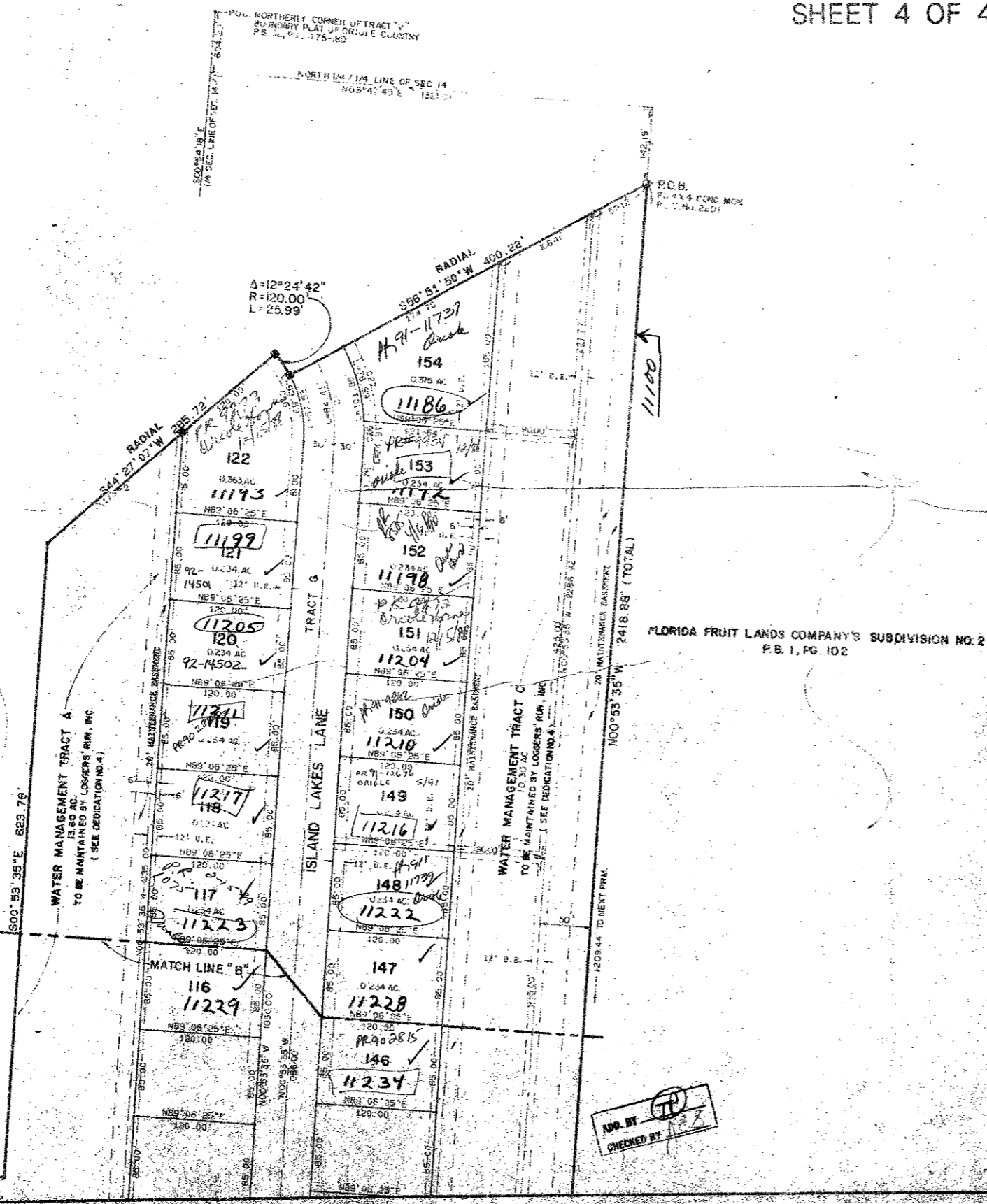
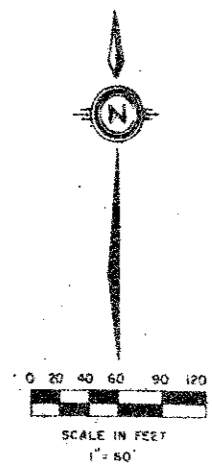


ISLAND LAKES SECTION ONE, PLAT TWO
 PART OF LOGGERS' RUN, A P.U.D.
 SITUATE IN SECTION 14, TOWNSHIP 47 SOUTH, RANGE 41 EAST,
 PALM BEACH COUNTY, FLORIDA, BEING A REPLAT OF A PORTION OF
 "BOUNDARY PLAT OF ORIOLE COUNTRY", (P.B. 32, PAGES 175-180).

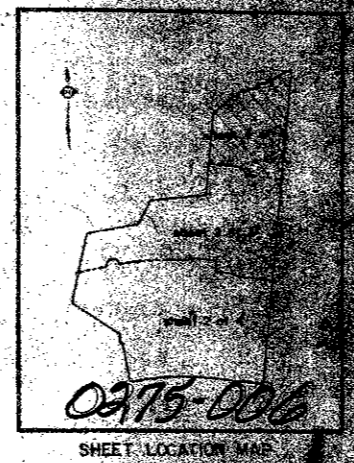
SHEET 4 OF 4

156

STATE OF FLORIDA
 COUNTY OF PALM BEACH
 THIS IS TO CERTIFY THAT THE
 ABOVE IS A TRUE AND CORRECT
 COPY OF THE ORIGINAL RECORD
 IN THE PUBLIC RECORDS OF THIS
 COUNTY.
 JOHN F. HARRIS
 CLERK OF COUNTY RECORDS



NO.	BEARING	RADIUS	LENGTH
101	37° 14' 38"	150.00	84.41
102	42° 01' 01"	50.00	37.38
103	47° 55' 03"	25.00	18.69
104	42° 01' 01"	25.00	18.69
105	47° 55' 03"	25.00	18.69
106	42° 01' 01"	25.00	18.69
107	47° 55' 03"	25.00	18.69
108	42° 01' 01"	25.00	18.69
109	47° 55' 03"	25.00	18.69
110	42° 01' 01"	25.00	18.69
111	47° 55' 03"	25.00	18.69
112	42° 01' 01"	25.00	18.69
113	47° 55' 03"	25.00	18.69
114	42° 01' 01"	25.00	18.69
115	47° 55' 03"	25.00	18.69
116	42° 01' 01"	25.00	18.69
117	47° 55' 03"	25.00	18.69
118	42° 01' 01"	25.00	18.69
119	47° 55' 03"	25.00	18.69
120	42° 01' 01"	25.00	18.69
121	47° 55' 03"	25.00	18.69
122	42° 01' 01"	25.00	18.69
123	47° 55' 03"	25.00	18.69
124	42° 01' 01"	25.00	18.69
125	47° 55' 03"	25.00	18.69
126	42° 01' 01"	25.00	18.69
127	47° 55' 03"	25.00	18.69



SUBDIVISION *
 BOOK *
 FLOOD ZONE *
 QUAD *
 SE *
 P.U.D. NAME *
 PAGE *
 FLOOD MAP *
 ZONING *
 ZIP CODE *
 DATE *
 DRAWN BY *
 CHECKED BY *

Meridian
 Surveying and Mapping
 DATE: MAY 1994
 CHECKED BY: [Signature]
 DRAWING NO: 84-P-004

ADD. BY [Signature]
 CHECKED BY [Signature]